

LYNX IM™

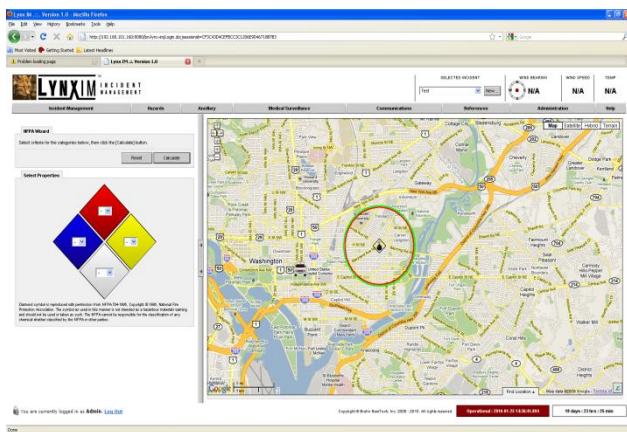
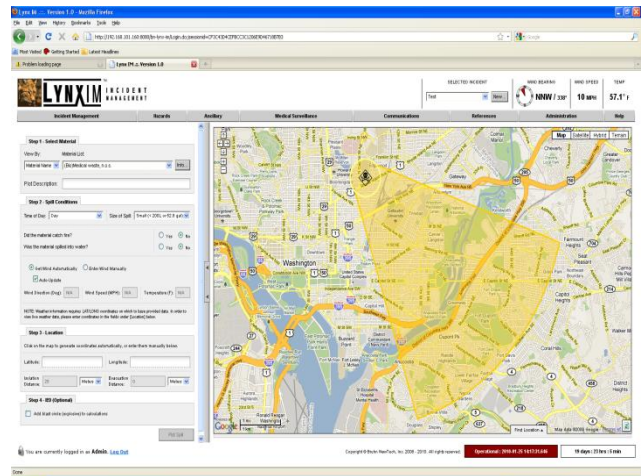
Incident Management for Homeland Security and First Responders

Lynx IM™ is a web-based Command and Control solution designed to address the need for greater flexibility and interoperability when managing threats and incidents.

Based upon Bruhn NewTech's experience developing operational software applications for CBRNE hazards and EOD, Lynx IM™ was created to provide public and civilian authorities with a modular software solution for incident management.

Lynx IM™ enables and provides:

- **Rapid Systems Integration** - utilizing a web-services architecture with plug and play modularity play modularity.
- **Command and Control** - integrating the latest and most popular mapping tools, tracking units and personnel, and allowing communications via e-mail, SMS and CAP messaging.
- **Hazmat Toolkits** - providing the user with an explosives calculator, wizard-based Emergency Based Guide (ERG) calculator, and an integrated wizard-based Areal Location of Hazardous Atmospheres (ALOHA) plume model tool.



- **Logistics Management** - providing tools to track assets and inventory; manage personnel checklists, certificates, and credentials; and to create and manage organization charts.
- **Reference Library** which contains over thirty eight (38) gigabytes of chemical resources and information, a digital version of the ERG, an Agent Identification tool, and the NFPA® Wizard tool.
- **Auxiliary Feeds** - fusing video and audio information from multiple sources like mobile and stationary cameras and cell phone video into a single command node.

**BRUHN
NEWTECH**

BECAUSE UNCERTAINTY IS THE GREATEST THREAT

Key Features

Incident Management

Allows users to access, analyze, and respond to both real and simulated situations. Details incident ownership, monitoring, tracking and communication. Facilitates post incident analysis. Integrates user specific icons for displaying assets in three operational modes on the map.

Maps

Mapping tools to plot incidents and facilitate situational awareness. Available mapping engines include Microsoft Virtual Earth™, Google™ Earth, ESRI, and OpenMap™.

Join Common Operational Picture

Enhances situational awareness by providing concurrent access to the common operational picture.

Live Weather Feeds

Increases accuracy and provides real time information for plotting hazard areas. Quickly toggle user display preferences in metric or US standards.

Unit Tracker

Uses JPS, HSM, and SCMA capabilities to efficiently monitor and direct personnel, determine status and position, and share positional updates.

Asset and Inventory Management

Ability to preload all personnel, vehicles, equipment, and inventory (assets) into the system for monitoring and use during incident response. Users may add, remove, or modify assets as resource change status.

Checklist Management

Create, import from templates, modify, and assign checklists to personnel during an incident. Monitor checklist completion in real time.

Incident Replay

Use the replay tool to watch an incident unfold minute by minute for After Action Debriefing and Training.

Contact one of the following offices for further information:

Bruhn NewTech A/S

Gladsaxevej 402
DK-2860 Soeborg
Denmark

Phone: +45 3955 8000
Fax: +45 3955 8080
E-mail: info@newtech.dk
Website: www.bruhn-newtech.com

Bruhn NewTech Inc.

8950 Route 108
Suite 226
Columbia, MD 21045-2130
USA

Phone: +1 410 884 1700
Fax: +1 410 884 6171
E-mail: info@bruhn-newtech.com
Website: www.bruhn-newtech.com

Bruhn NewTech Ltd.

Suite 6, The Portway Centre
Old Sarum Park Salisbury Wiltshire
SP4 6EB
The United Kingdom

Phone: +44 1722 417 000
Fax: +44 1722 417 014
E-mail: info@bruhn-newtech.co.uk
Website: www.bruhn-newtech.com

Version Control- Revised Jun. 2010 - Specifications Subject to change without notice E&EO - All information copyright © 2009 Bruhn NewTech All Rights Reserved

**BRUHN
NEWTECH**

BECAUSE UNCERTAINTY IS THE GREATEST THREAT