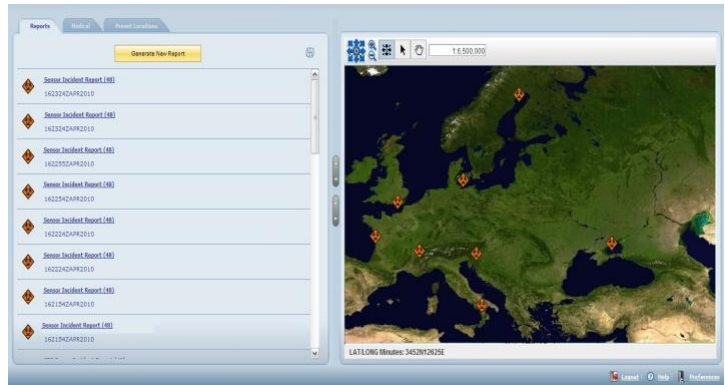


DataGate™

Secure Gateway for Enterprise Data Distribution and Management

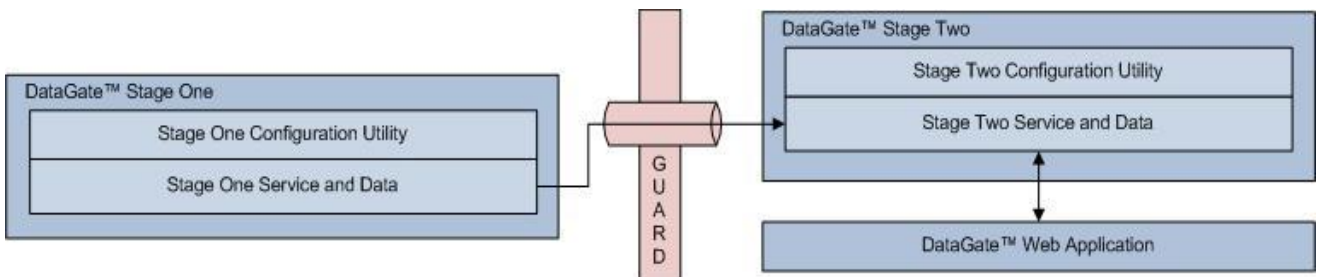
DataGate™ is a proven software solution which enables an organization to manage data flow from an unsecured network to a secured network in order to make valuable information available to more systems and users in an enterprise.

Based upon Bruhn NewTech's experience developing operational software applications for CBRNE hazards, sensor integration and EOD, DataGate™ is designed with a "security-first" approach in order to leverage a Commercial-Off-The-Shelf (COTS) solution which effectively addresses the complex needs of today's enterprise network environments.



DataGate™ is comprised of three software modules:

- **DataGate™ Stage One** – resides on the unsecure network and collects, prepares and transmits data to the secure network. Collection of data is dynamic and tailored to needs of the system serving the data.
- **DataGate™ Stage Two** – resides on the secure network and receives, archives, and distributes data to enterprise systems and users. Web services are utilized to enable a simple and efficient method of integration with pre-existing systems within the organization.
- **DataGate™ Web Application** – provides a user-friendly, map-enabled interface for users to view and manage archived data without the need of a locally installed software application. A web browser is the only installed software that is required



**BRUHN
NEWTECH**

BECAUSE UNCERTAINTY IS THE GREATEST THREAT

Key Features

Enterprise Network Conduit

Tools to collect and distribute data throughout the enterprise via approved network diodes. A proven internal XML structure geared towards network security has been designed, implemented and fielded to streamline the security accreditation process. Deployed systems include approvals to operate on and traverse secure U. S. Department of Defense networks.

Simplified Integration

Web Services have been leveraged to simplify the integration process with other systems within the organization. These documented services enable external systems to send new or updated data or query information archived within the system.

Throttling

Network bandwidth is a prized commodity. Throttling parameters can be set by the user to manage the amount and types of data sent from the system across the network.

Queuing

Network connectivity is never a guarantee. A queuing capability is implemented to ensure that no data is ever lost due to a network outage.

Maps

The web application has integrated OpenMaps[®] mapping system, an open source mapping engine, to enhance overall situational awareness by presenting geo-coded system data on a map.

Notifications and Alerts

Configurable criteria can trigger email notifications and/or system alerts quickly notify personnel or other systems that an event has occurred or that an action is required.

Configuration Utility

System configuration is a very simple and user-friendly process with the graphically driven administration utility.

Contact one of the following offices for further information:

Bruhn NewTech A/S

Gladsaxevej 402
DK-2860 Soeborg
Denmark

Phone: +45 3955 8000
Fax: +45 3955 8080
E-mail: info@newtech.dk
Website: www.bruhn-newtech.com

Bruhn NewTech Inc.

8950 Route 108
Suite 226
Columbia, MD 21045-2130
USA

Phone: +1 410 884 1700
Fax: +1 410 884 6171
E-mail: info@bruhn-newtech.com
Website: www.bruhn-newtech.com

Bruhn NewTech Ltd.

Suite 6, The Portway Centre
Old Sarum Park Salisbury Wiltshire
SP4 6EB
The United Kingdom

Phone: +44 1722 417 000
Fax: +44 1722 417 014
E-mail: info@bruhn-newtech.co.uk
Website: www.bruhn-newtech.com

Version Control- Revised Jun.2010 - Specifications Subject to change without notice E&EO - All information copyright © 2009 Bruhn NewTech All Rights Reserved

**BRUHN
NEWTECH**

BECAUSE UNCERTAINTY IS THE GREATEST THREAT