

# CBRN-ShipSafe

Integrated shipboard CBRN protection system

---

CBRN-ShipSafe is a monitoring system that provides a central overview of CBRN hazards around or onboard naval vessels.



## It meets the requirements to:

- Receive immediate warning if the ship enters Chemical, Biological or Radiological hazards
- Presents an overview of affected compartments in Damage Control Centre and within the ship damage control system
- Receives a warning of nearby areas with potential CBRN hazards
- Issue information of encountered hazards to Fleet and Joint/Coalition Headquarters

## CBRN-ShipSafe provides:

- Interface to all onboard CBRN Sensors inside and outside
- Overview display with status of all sensors
- Remote control of sensor configuration
- Option for link into Damage Control System
- Option for CBRN-Sim sensor simulation
- Option for NBC-Analysis Warning and Reporting software
- Known warning areas received and displayed on maps
- Downwind hazards from detections calculated
- Detection results can be transmitted



## Reference:

Bruhn NewTech sensor integration is fully operational in the navies of Italy, Spain, Belgium and the Netherlands. In addition, land based variants are in use in the US Army CBRN Stryker and Joint JSLNBCRS, the UK TDP program and the Swedish and Bulgarian Armed Forces.

---

**BRUHN  
NEWTECH**

BECAUSE UNCERTAINTY IS THE GREATEST THREAT

## Key Features

### Sensor Monitoring

CBRN-ShipSafe provides an overview of CBRN Hazards based on sensor results from inside and outside the ship. Results from all sensors are linked into the system and presented as a simple overview or as more detailed information for each sensor.

### Sharing of information

CBRN-ShipSafe seamlessly feeds CBRN information to a Joint Common Operational Picture by transmission of NBC reports. Reports are formatted in accordance with NATO standards to allow interoperability.

### Vendor Independent

CBRN-ShipSafe interfaces to any sensor from any manufacturer. More than 25 sensors have been interfaced already and additional sensors will be integrated on request. As customers often combine sensors to find the best mix for their requirement, a single monitoring system is preferred as the best possible solution.



### Situational Awareness

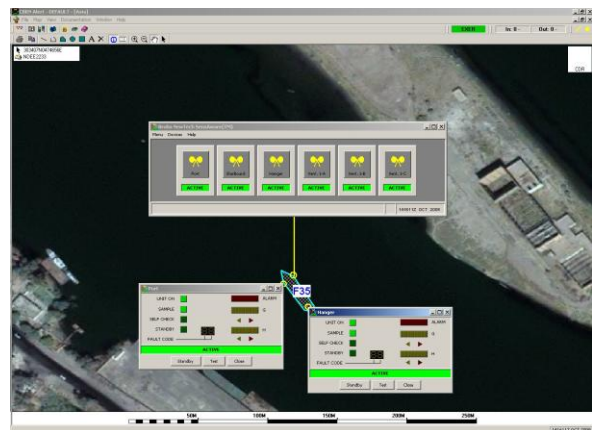
CBRN-ShipSafe provides Situational Awareness of the CBRN Picture. As an optional feature for hazard management CBRN-ShipSafe can include the NBC-Analysis Warning and Reporting System that display a geographical overview of all CBRN Hazards compared to the vessels position.

### Simulation

CBRN-ShipSafe optimizes training by using a realistic simulation module. Based on the hazards planned by the instructor, the sensors will react realistically when entering a simulated hazard area, either based on the actual vessel position in exercises or based on a simulated position for training in port or in the classroom.

### Hardware

Can be delivered with Mil-Spec hardware or run on existing equipment.



Contact one of the following offices for further information:

#### Bruhn NewTech A/S

Gladsaxevej 402  
DK-2860 Soeborg  
Denmark

Phone: +45 3955 8000  
Fax: +45 3955 8080  
E-mail: [info@newtech.dk](mailto:info@newtech.dk)  
Website: [www.bruhn-newtech.com](http://www.bruhn-newtech.com)

#### Bruhn NewTech Inc.

8950 Route 108  
Suite 226  
Columbia, MD 21045-2130  
USA

Phone: +1 410 884 1700  
Fax: +1 410 884 6171  
E-mail: [info@bruhn-newtech.com](mailto:info@bruhn-newtech.com)  
Website: [www.bruhn-newtech.com](http://www.bruhn-newtech.com)

#### Bruhn NewTech Ltd.

Suite 6, The Portway Centre  
Old Sarum Park Salisbury Wiltshire  
SP4 6EB  
The United Kingdom

Phone: +44 1722 417 000  
Fax: +44 1722 417 014  
E-mail: [info@bruhn-newtech.co.uk](mailto:info@bruhn-newtech.co.uk)  
Website: [www.bruhn-newtech.com](http://www.bruhn-newtech.com)

Version Control- Revised Jun. 2010 - Specifications Subject to change without notice E&O - All information copyright © 2009 Bruhn NewTech All Rights Reserved

# BRUHN NEWTECH

BECAUSE UNCERTAINTY IS THE GREATEST THREAT